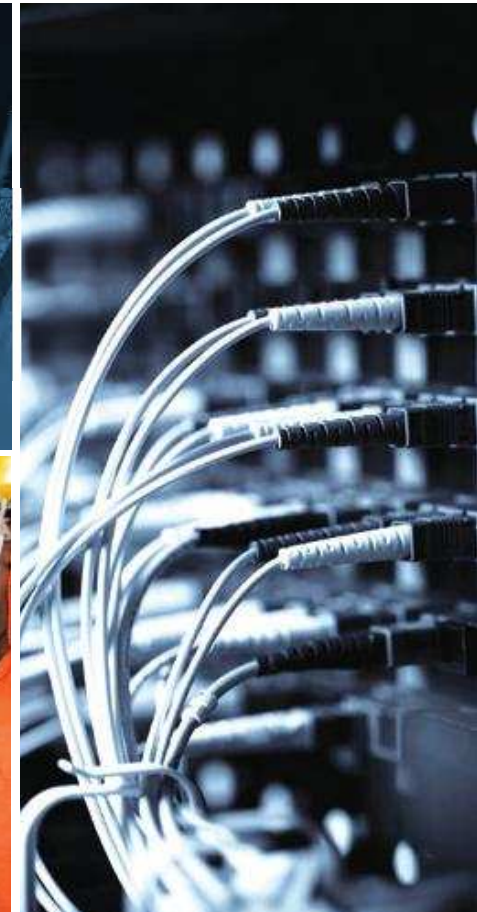


Electrical & Instrumentation Engineering Services



PEC established a specialised electrical & instrumentation engineering services division in order to complement the on-going Project Works and Plant Maintenance service capabilities. The services provided include design, procurement, installation, commissioning, testing, calibration, servicing and maintenance for electrical and instrumentation projects.

These services were established in line with our aim of improving the overall efficiency of your electrical & instrumentation operations. Ranging from a small and nimble team for a specific assignment to an integrated team of engineers, technicians and tradesmen for capital projects, we are able to respond with services that will meet your needs. This technical expertise is further strengthened by our partnership with Yokogawa Engineering Asia, which enables us to implement the best practices and technologies in our engineering designs to give your project that competitive advantage.

Involving our trained personnel in your projects will also ensure safe, timely, on budget and seamless commissioning and start-up. Our comprehensive services cover electrical

& instrumentation installation, pre-calibration, inspections, checkouts, functional tests and proving loop integrity.

Under our maintenance services offerings, we can offer instrument, electrical and analyser maintenance, electrical & instrumentation capital projects, inspection as well as system integration services. As your total maintenance service provider, we will work in partnership with you to deliver the optimum performance standards for your electrical & instrumentation needs, within budget and at the highest safety standards that PEC is reputed for.